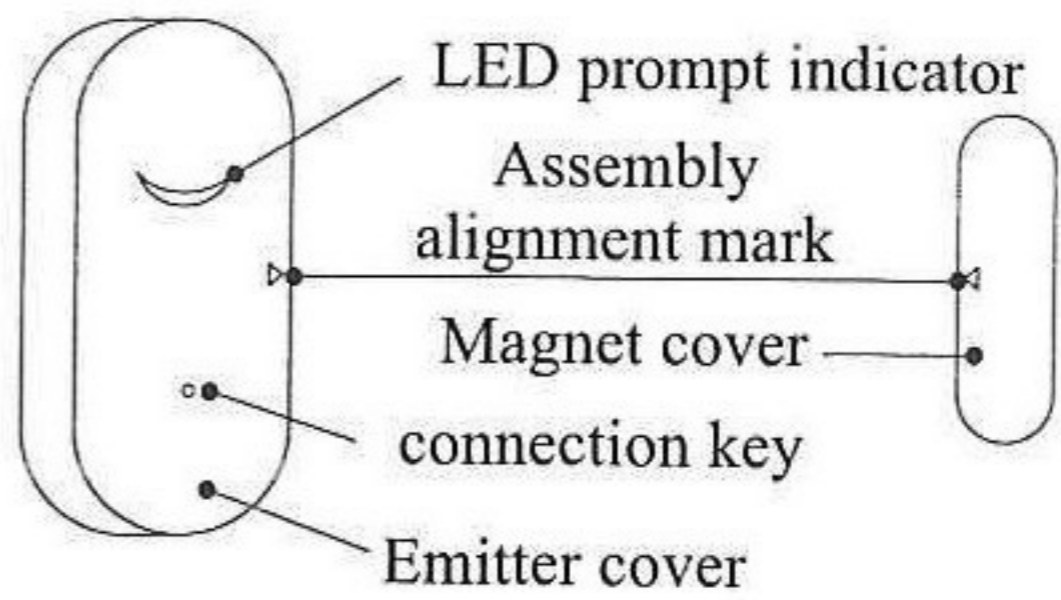


Wi-Fi Door Magnetic Detector

Operation Instructions

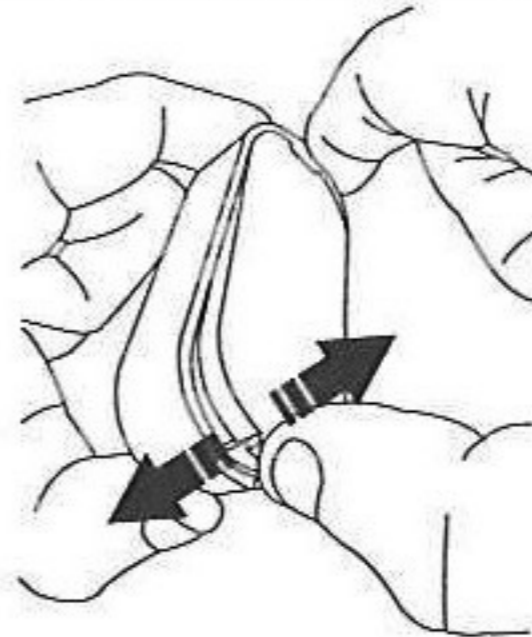
I.Appearance Introduction



II.Installation

1.Way for battery installation

- ① Open the rear cover of the emitter

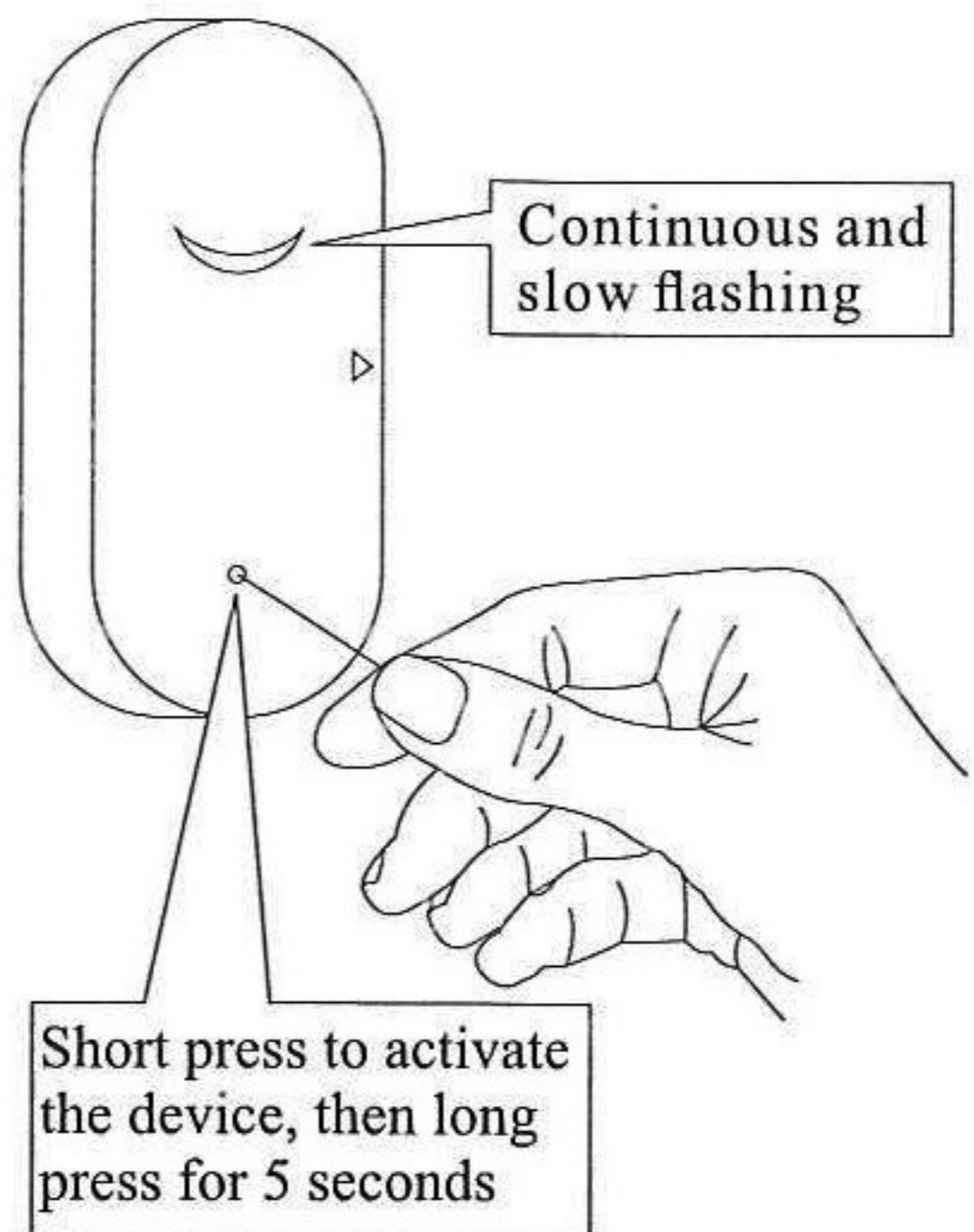


- ② Place two 7# batteries (AAA batteries) properly

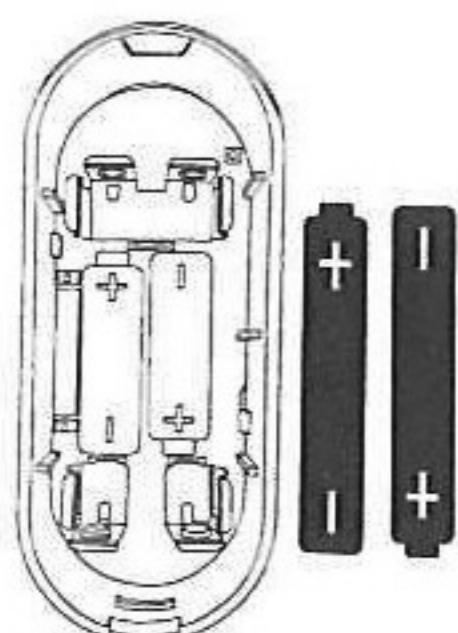
③



④

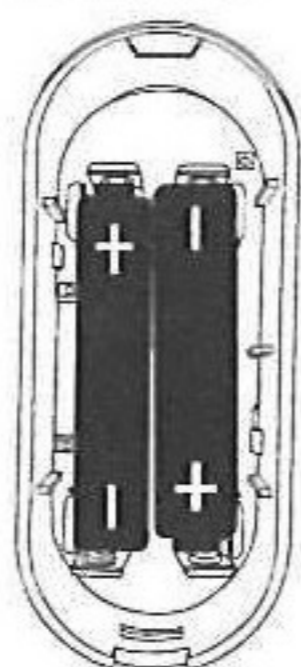


Observe whether the LED light flashes slowly, if it is not flashing slowly, press and hold for 5 seconds.

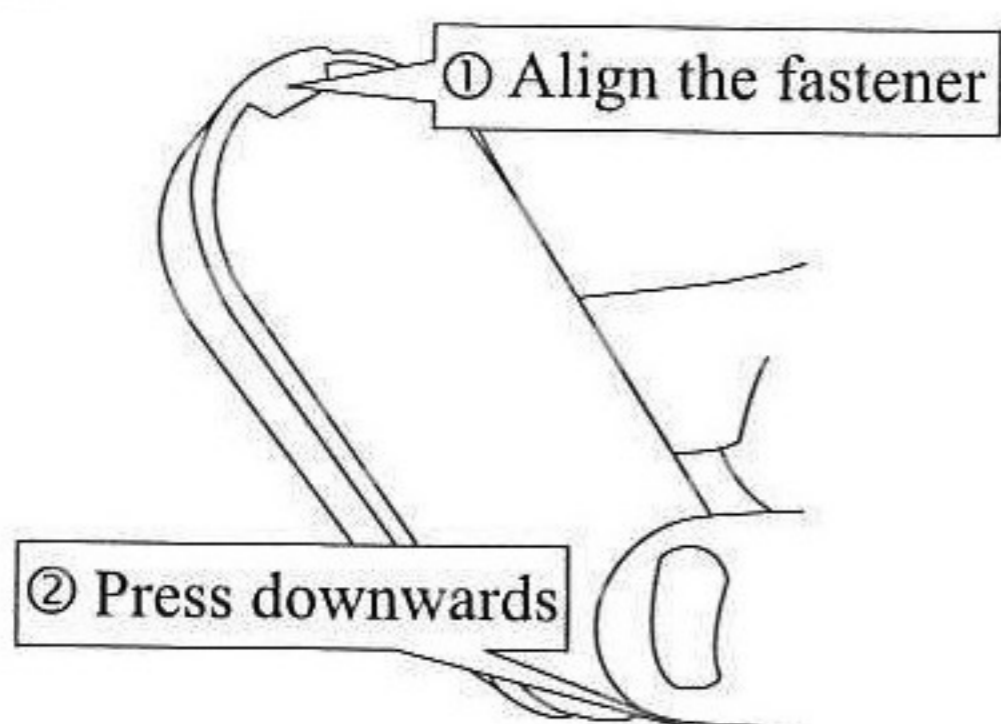


2 AAA batteries

③ End of battery installation



④ Close the rear cover



III. Tuya Smart

1. Download APP



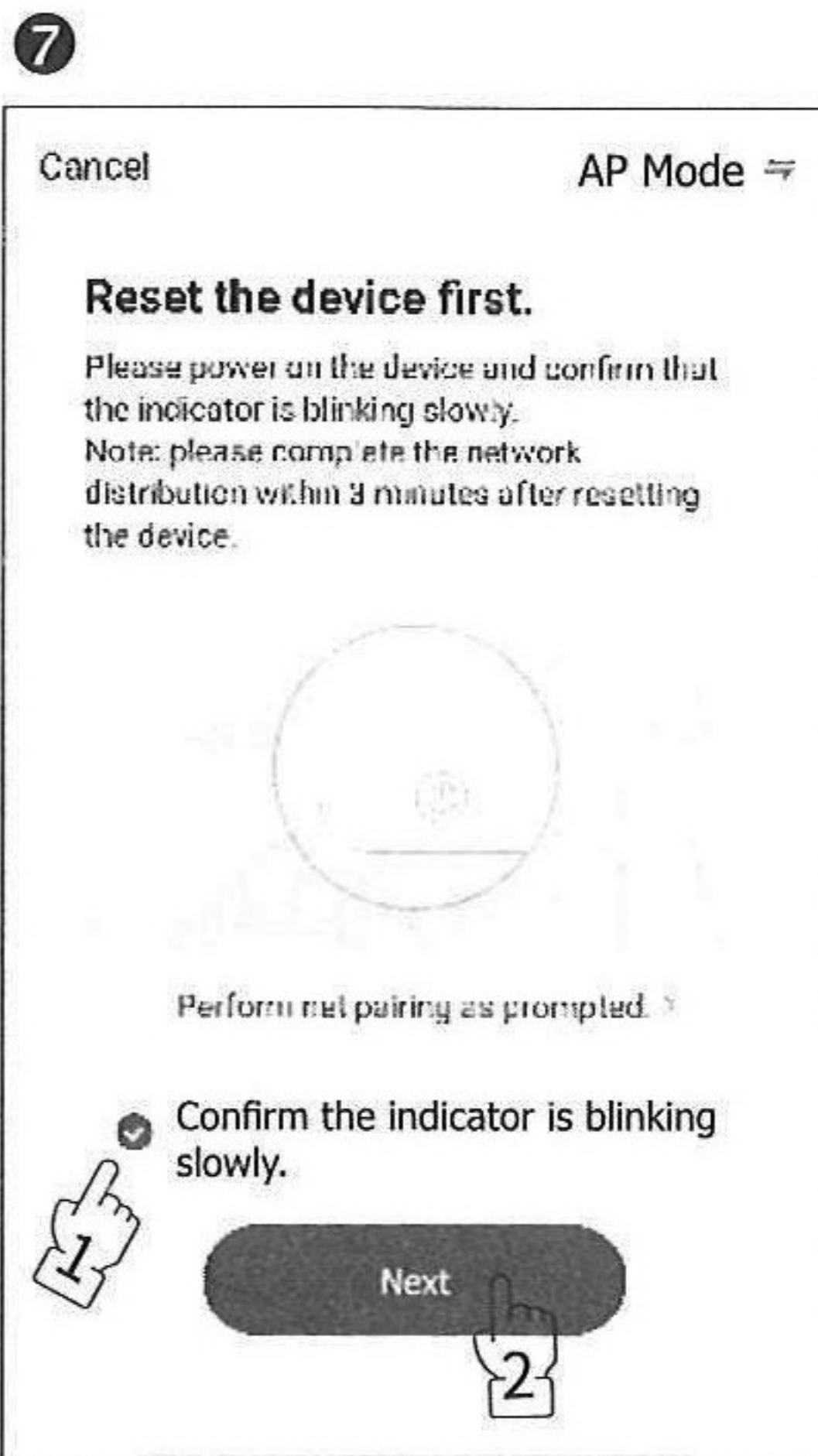
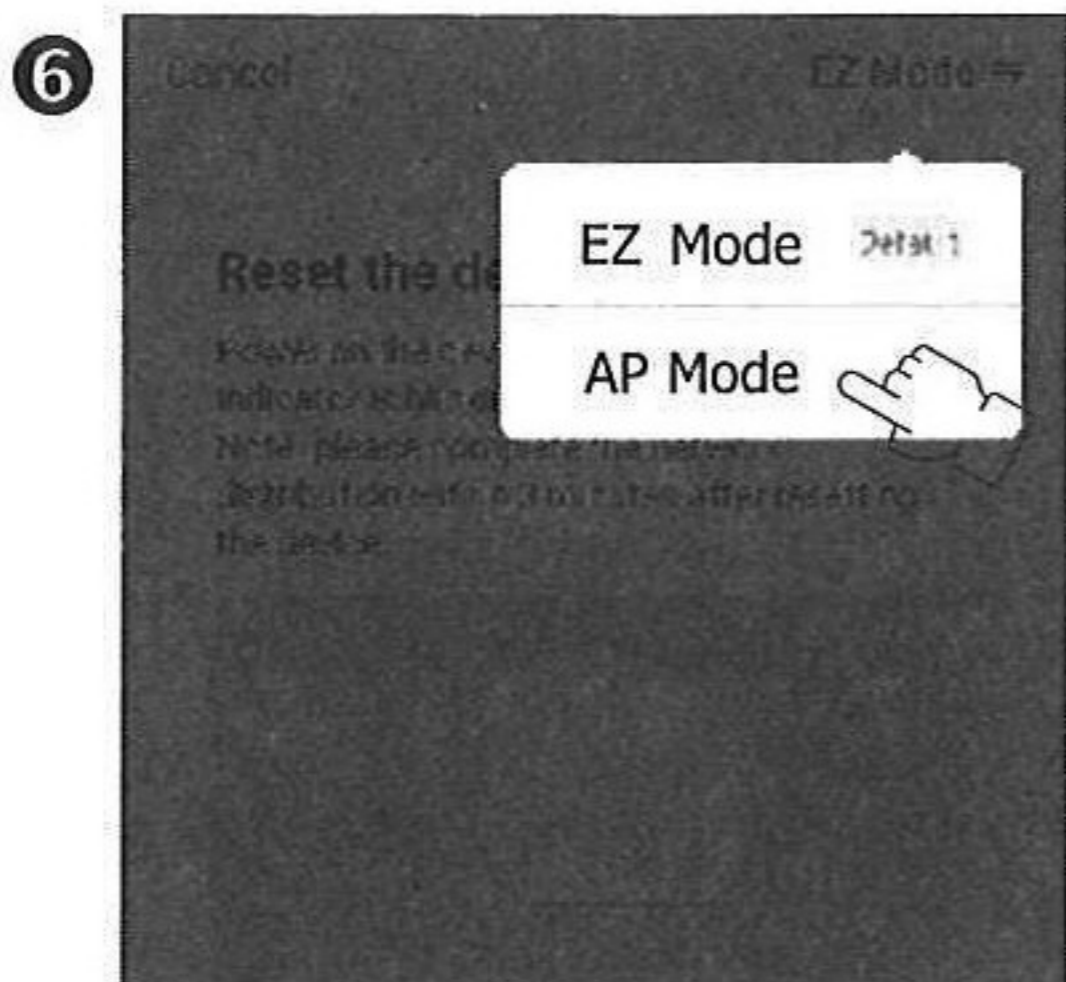
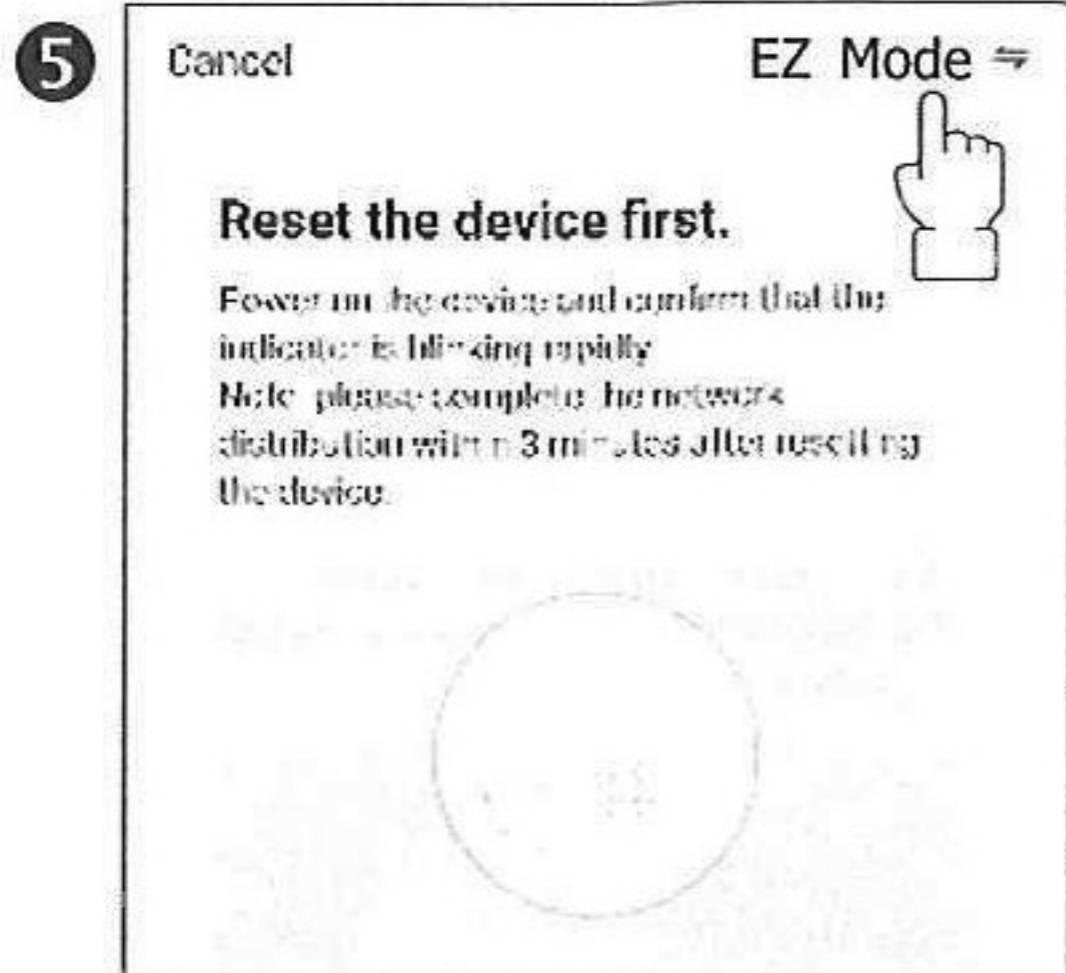
Tuya Smart



Smart Life

- Scan the two-dimensional code and download “Tuya Smart or (Smart Life)”.
- IOS: please download the “Tuya Smart or (Smart Life)” at apple application market.
- Android: please download the “Tuya Smart or (Smart Life)” at application market.

2. Register/login Tuya Smart



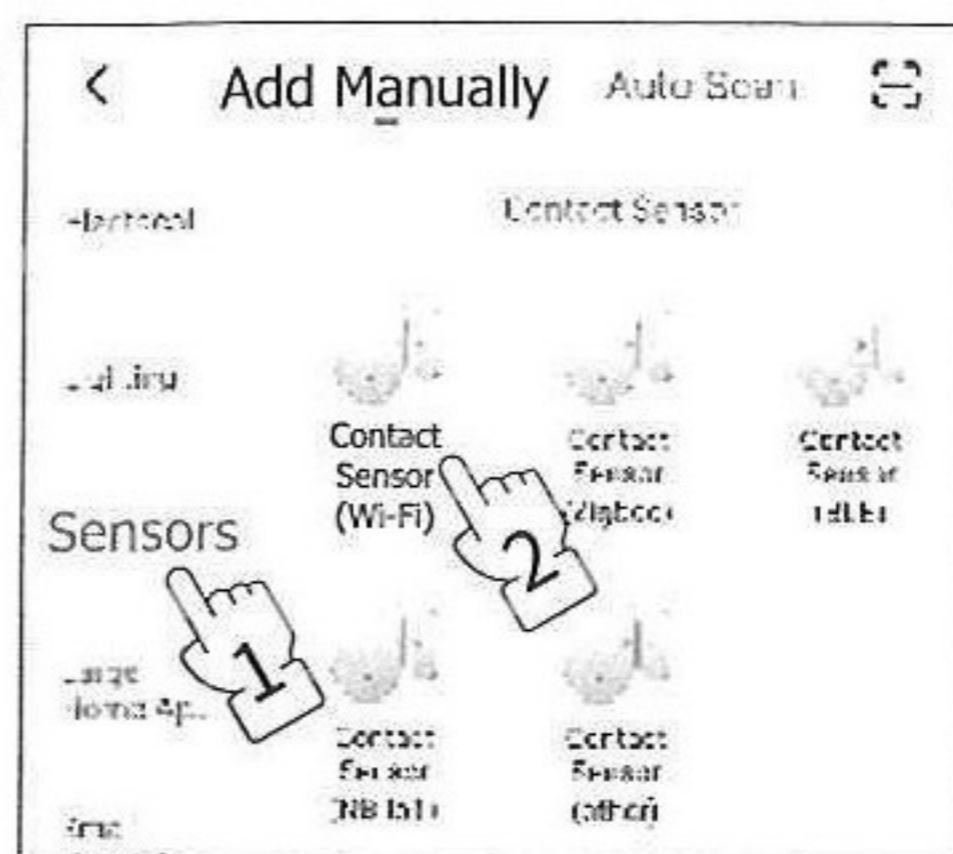
3. Network with mobile phone (two methods)

Method 1: Wi-Fi Quick Connect

1



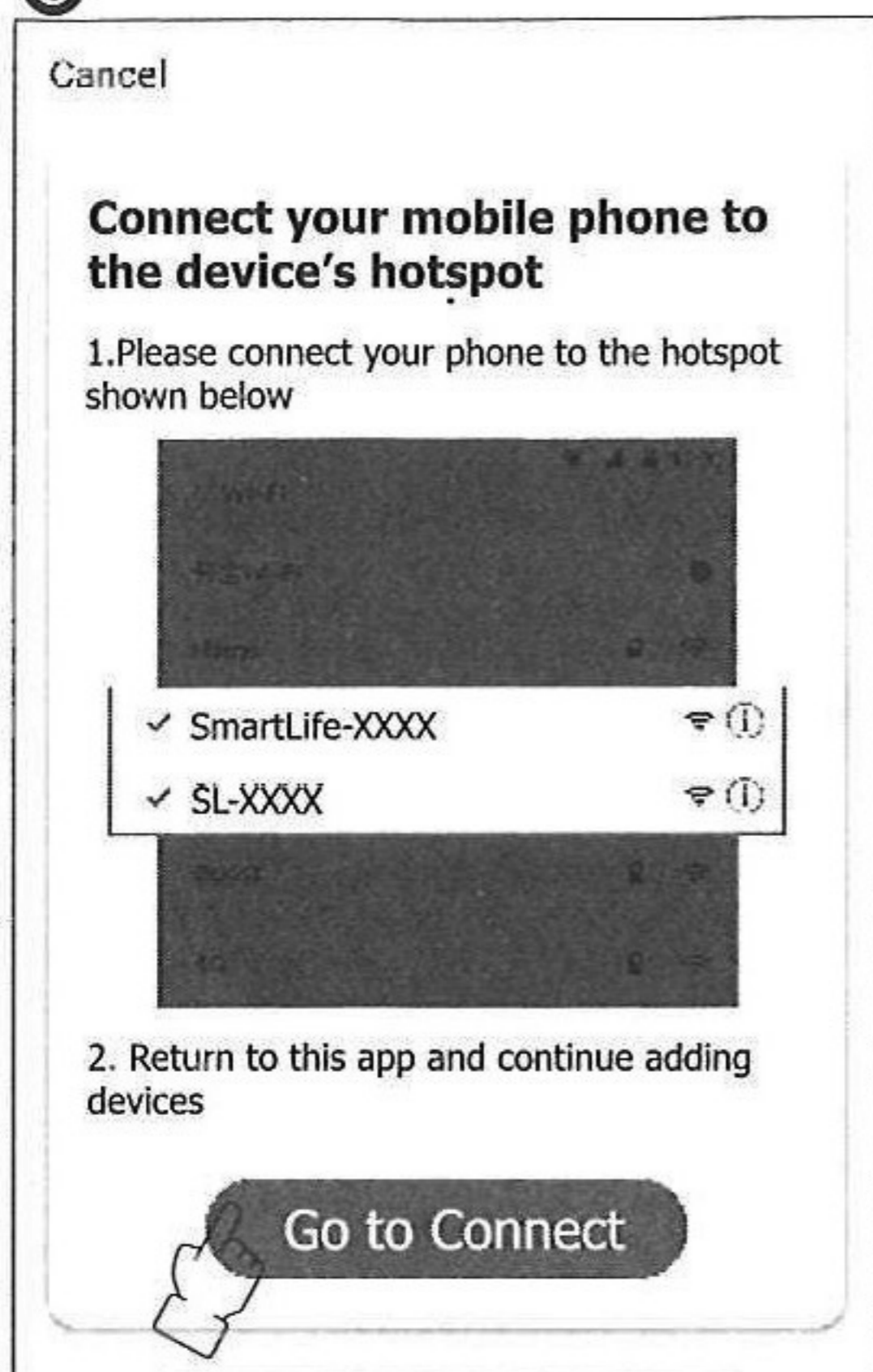
2



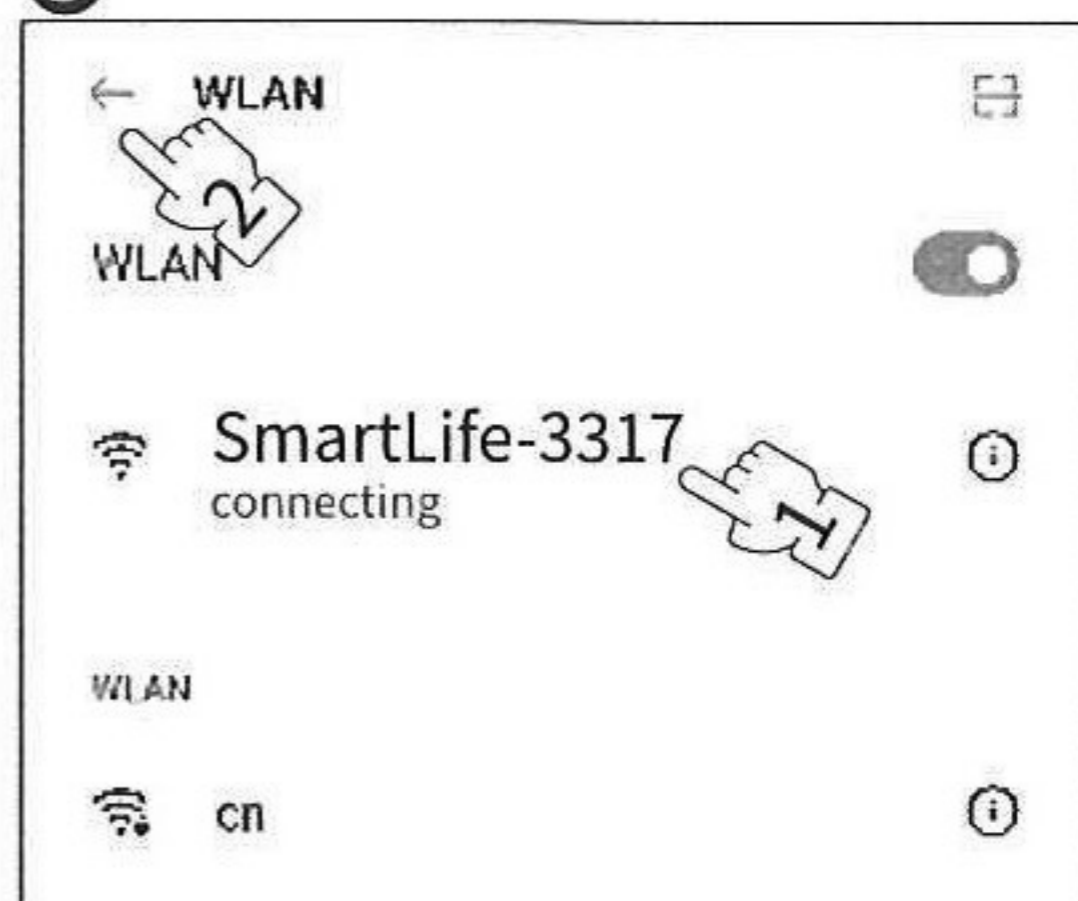
3



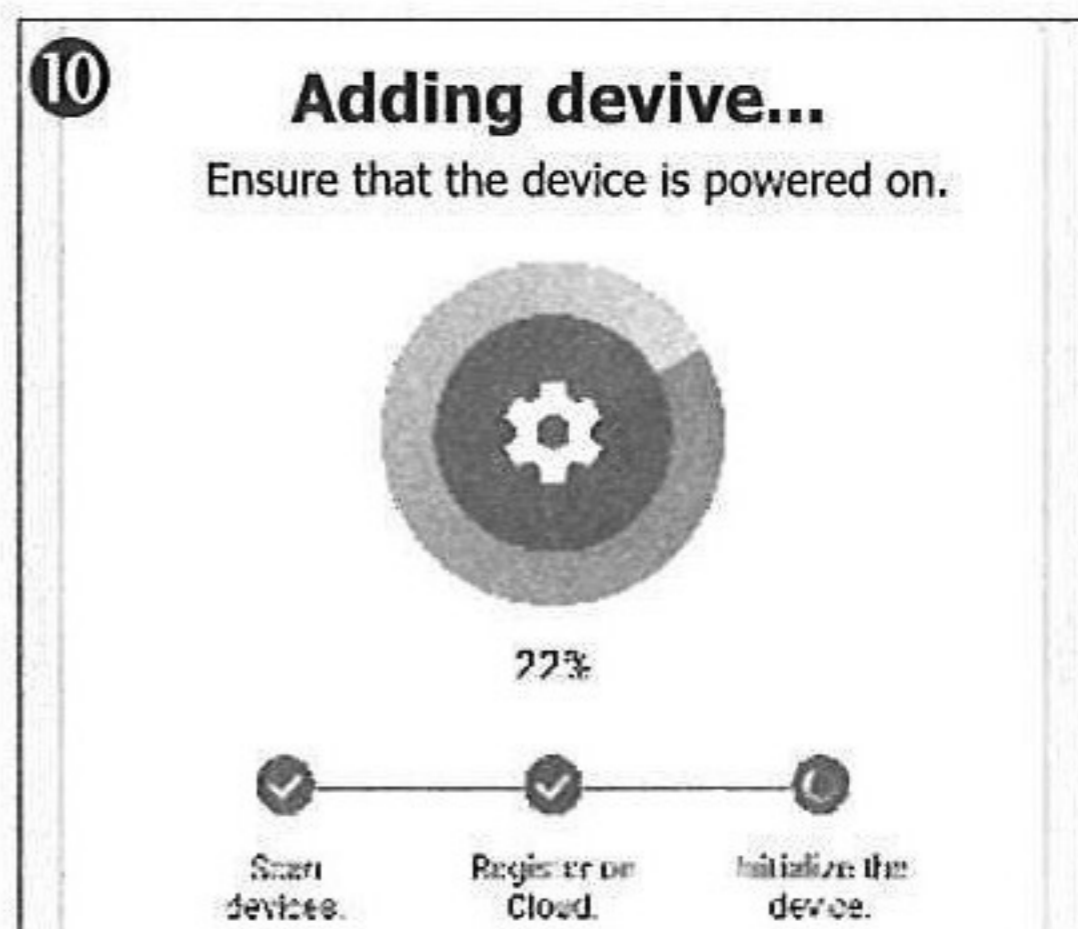
8



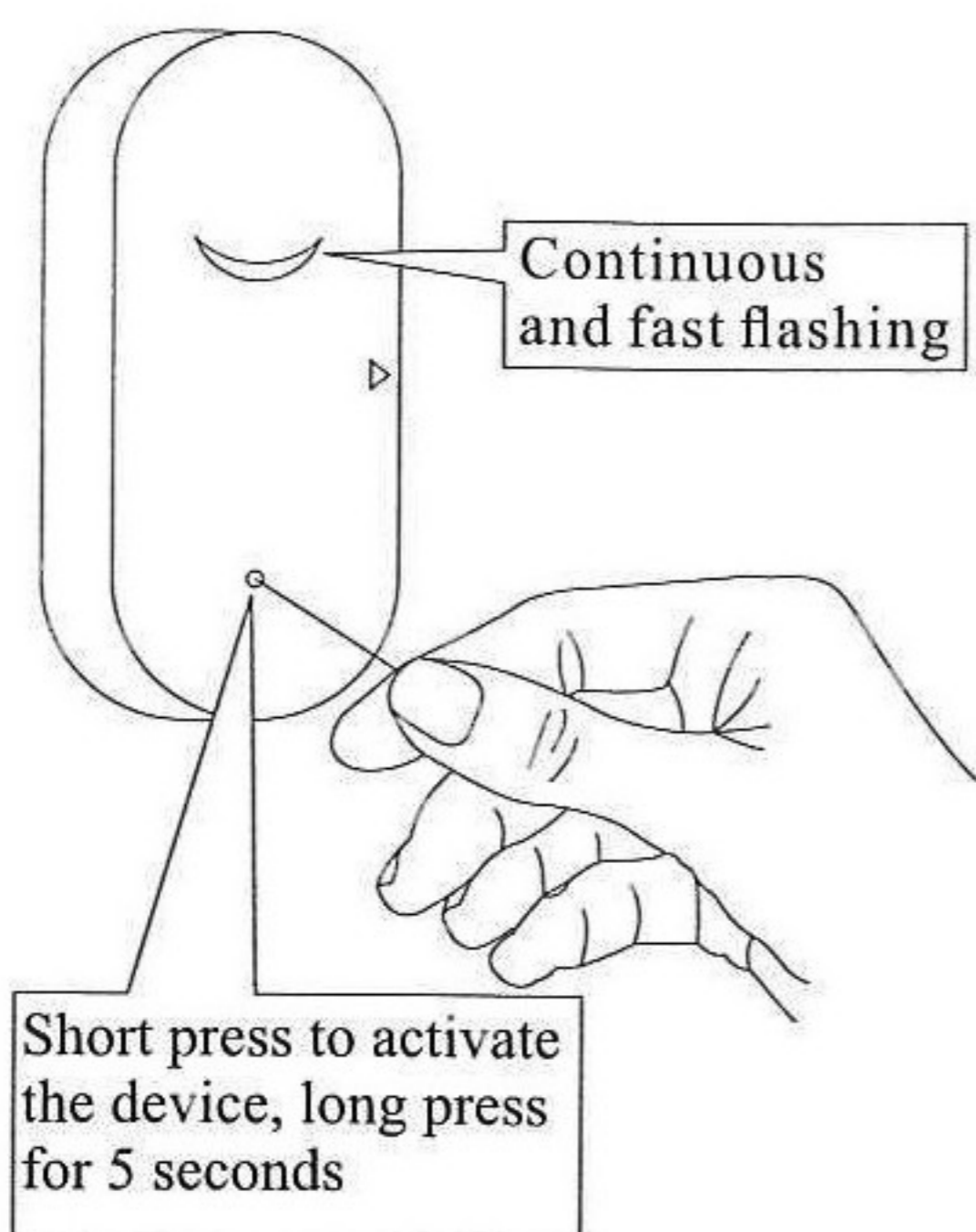
9



10

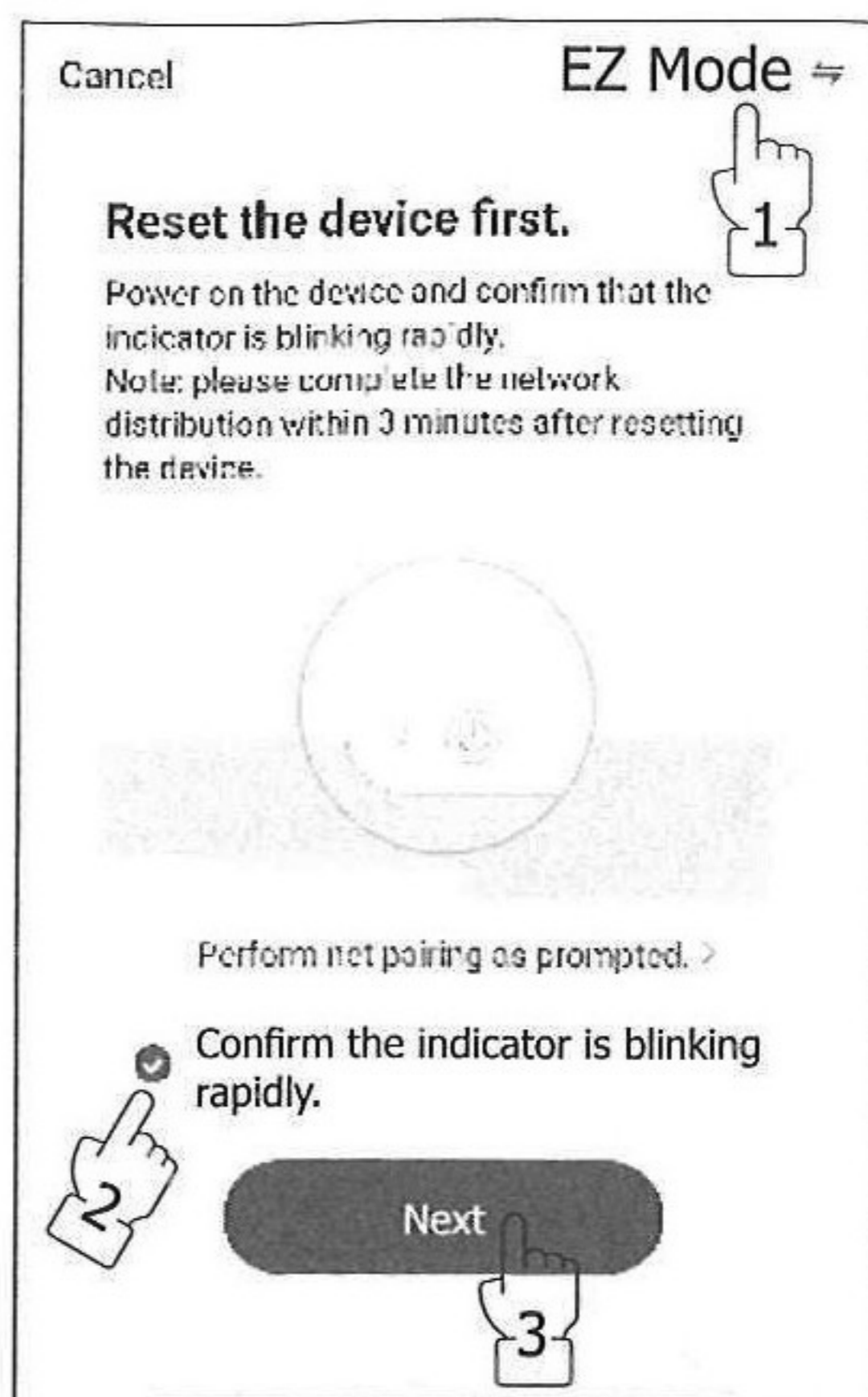


4



Observe whether the LED light flashes quickly

5



11



IV. Way for fixing and installation

3M glue fixing

- ① Tear off each side of release paper on two foam glue, and attach two foam glues respectively onto the fixing surfaces of the emitter and the magnetic stripe (as shown in Figure 1).
- ② Tear off the release paper on the back of the remitter and the magnetic stripe and attach it at the installation position of a door or a window (as shown in Figure 2).

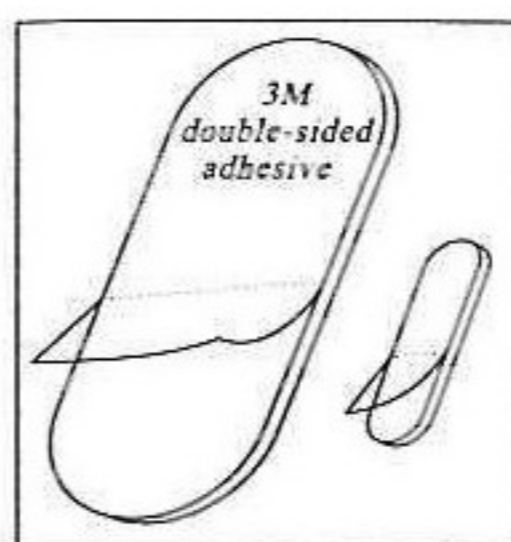


Figure 1

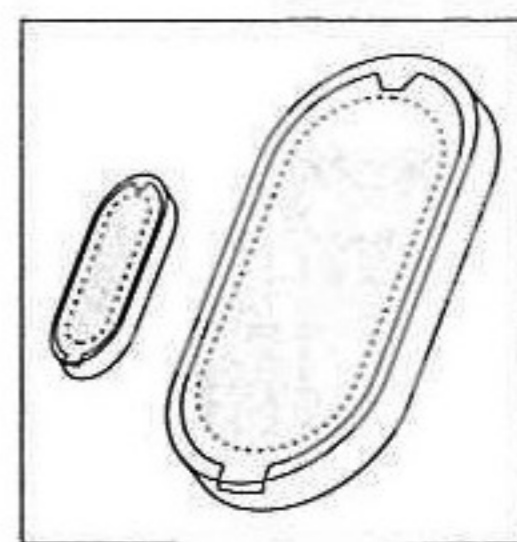
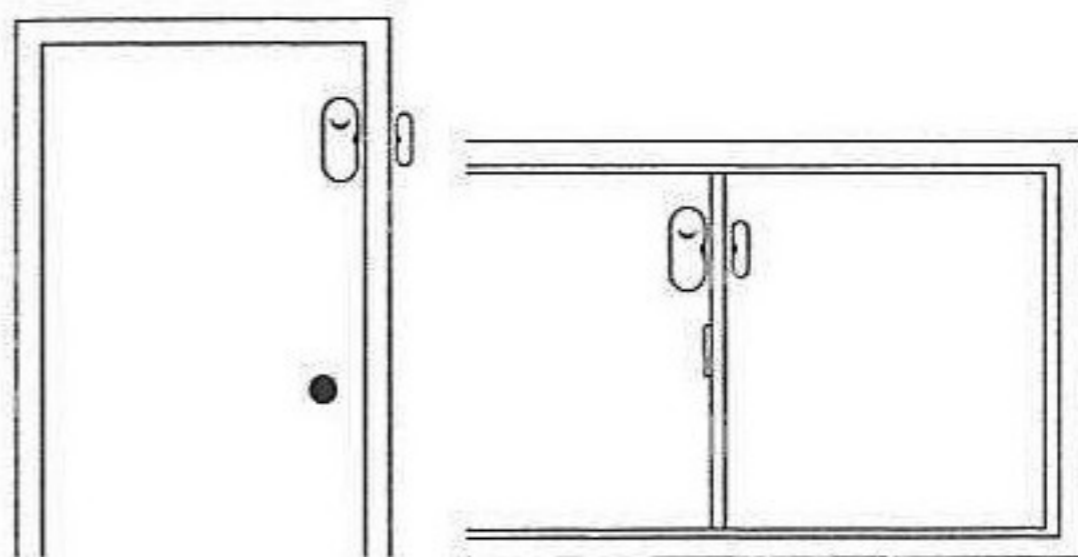


Figure 2

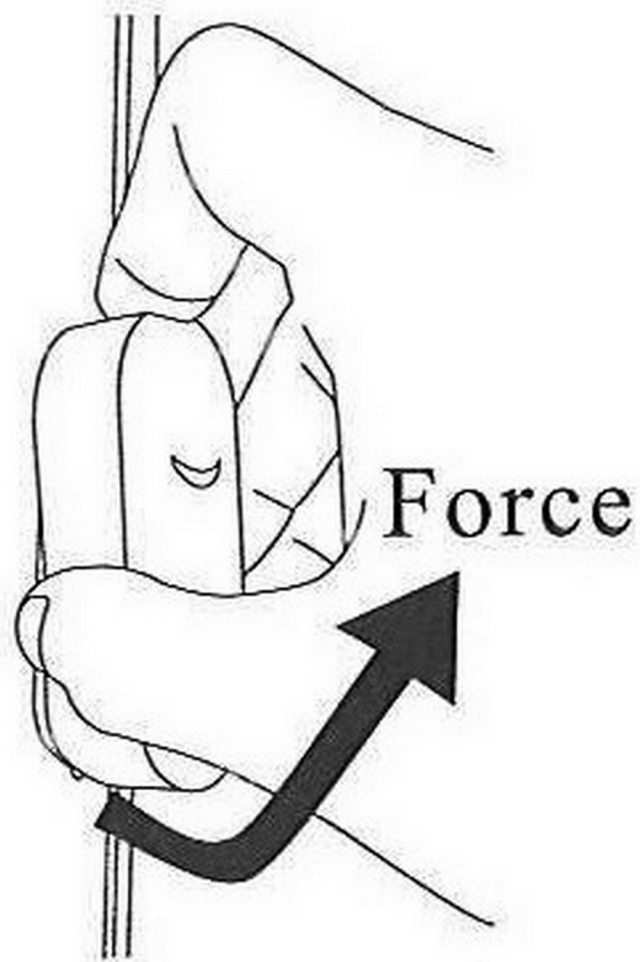


V. Maintenance

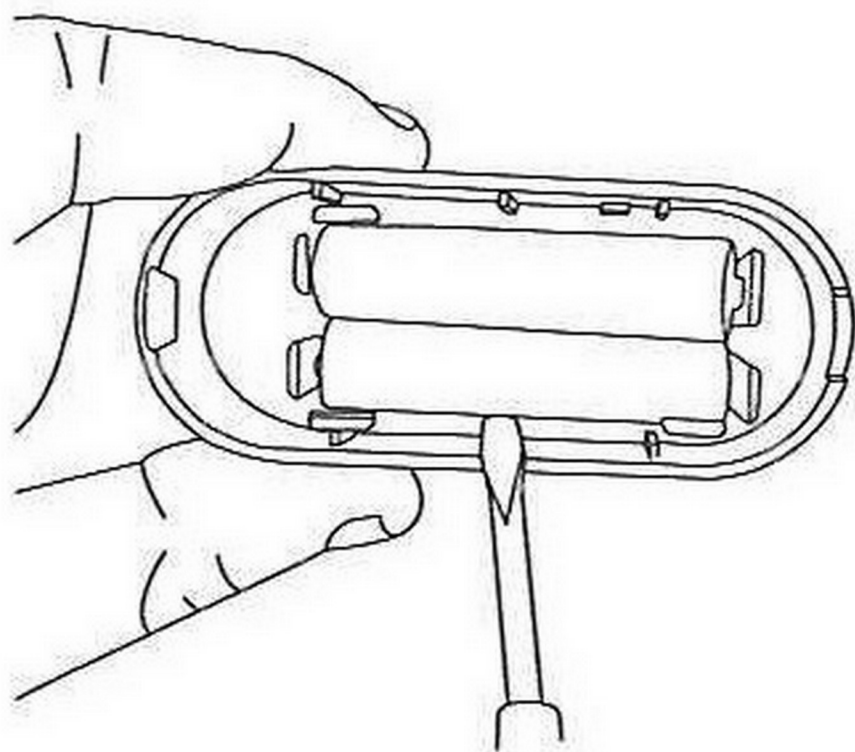
1. Change the batteries

Battery lower power warning:
When the battery power is lower than 20%, the APP will warn that the battery needs to be replaced.

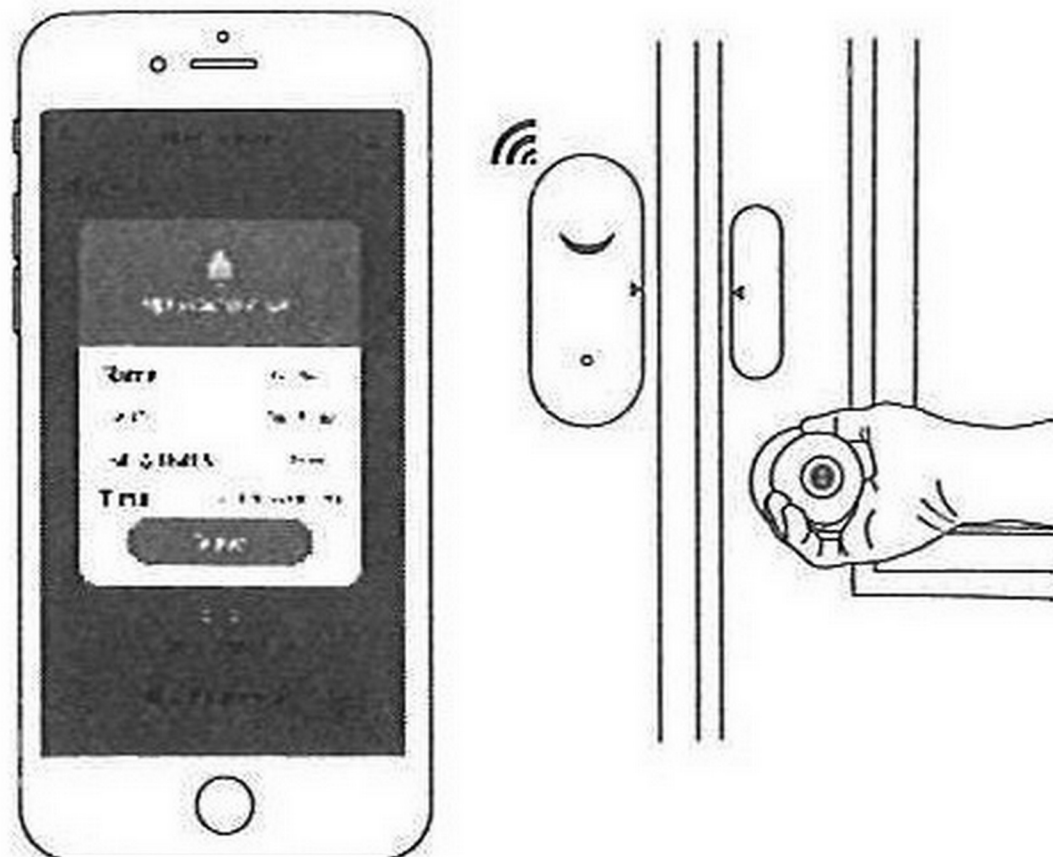
① Remove the outer casing



- ② Use a screwdriver to take out the battery from the side



VI. Testing the emitter



VII. Specifications

Working voltage: DC3V
(LR03AAA*2)

Static current: 30 μ A

Transmitting current: 35mA

Working environment: 0°C - +50°C

WiFi: IEEE 802 11 b 2.4GHz

Alarm output: Tamper alarm, Open door reminder, Closing reminder, Low battery warning