

User Manual

Preface

The wireless alarm siren can work as a standalone alarm host or wireless siren which code and work with other alarm host. It can match multiple wireless detectors and be controlled by remote controller, make local alarm by sound and light when detector triggered.

It should be installed at the heartland of the guarded area, to consider the best reception from all wireless detectors. Pay attention that the Alarm Host should be installed as far as possible from the large metal objects or with high frequency interference of household appliances; Meantime, to avoid the shield of ferroconcrete wall and fire-proof door.

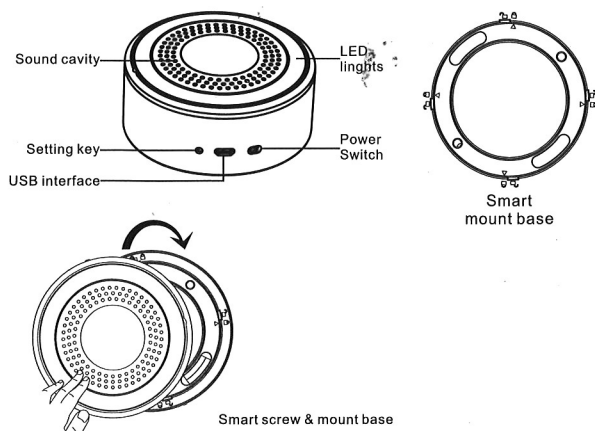
Function

1. work as a standalone alarm host or wireless siren.
2. 20 wireless defense zones.
3. At most 5 wireless remote controllers.
4. Alarm with both voice prompts and quick flash strobe.
5. Wireless learning code: adding new accessories, convenient, safe and efficient.
6. One-key-control function: Remote control to Arm/emergency alarm/disarm.
7. Built-in rechargeable Lithium battery.
8. Smart screw & mount base.

Function Setting

1. Initialization

Power the siren by power adapter or turn on the battery switch, the siren will sound and flash twice; In arm state it will flash once every 10 seconds.



2. Coding of Remote Controller & wireless Detector

The remote controller and wireless detectors should be coded with the alarm siren in order to normally work together.

In Armed or disarmed state, keep pressing the alarm set key ❶, until it rings and flashes once, release the set key, the alarm flashes fast, waiting for wireless signal, press SOS key ❷ of a remote controller or trigger a detector to launch a wireless signal, the alarm launch a long and a short alert tone after it receive and code the signal successfully. If you want to code next remote controller or detector, only trigger another remote or detector again. If the alarm cannot receive any wireless signal within 10 seconds, it will exit automatically.

Operation method: keep pressing [set] key ❶, until it sounds once and flashes once, then release it.

3. As wireless strobe siren settings

It can work with other alarm host as a wireless external siren. It will flash and sound when the host has an alert.

In Armed or disarmed state, keep pressing the set key of the alarm siren, until it rings and flashes twice, release the set key, it flashes fast and wait for wireless signal; let alarm host launch a wireless coded signal, once received, the siren would send out a long and a short alert tone, it means success of code.

Operation method: keep pressing [set] key ❶, until it rings and flashes twice.

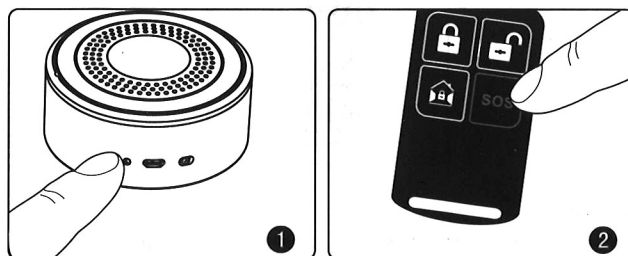
4. Delete all Remote Controllers & detectors

Be careful! This operation is for deleting all Remote Controllers & detectors, you can't delete a single one.

After this operation, You can't operate the alarm by remote controllers and trigger alarms by detectors, as all are deleted.

In armed or disarmed state, pressing the set key until it rings 3 times, indicator lights flash quickly. Release the set key, it deletes successfully with sounding a short and two long tones.

Operation Methods: Keep pressing [set] key ❶, until it rings 3 times, flashes 3 times.



5. Standalone Alarm Siren State

5.1 Arm state: In this state, all detectors can trigger it alarm.

5.2 Disarm state: In this state, none detector can trigger it alarm.

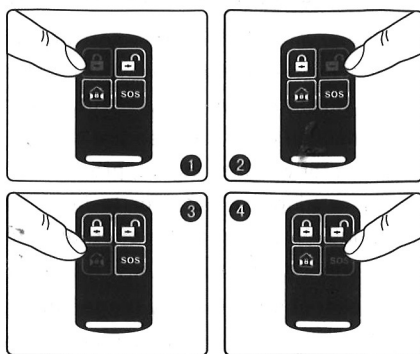
5.3 Alarm state: In this state, the siren alarm by sound and flash on spot. It will exit alarm automatically after 3 minutes if no operation, return to standby state.

6. Operation of remote controller

Arm: press [] or [] key (❶ or ❸).

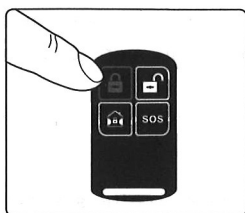
Disarm: press [] key ❷.

Emergency alarm: press [sos] key ❹.



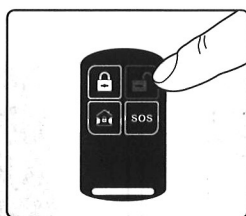
7.Out arm

Out Arm means the standalone alarm carry out all alert deployment:when no one at home,you need to place a comprehensive detection alert with the alarms on prevention spots,ensure all detectors are in working condition;when probe source (thief intrusion,fire broke out,gas leak etc.) trigger the detector,the alarm system give an alarm immediately Remote operation:press remote control [out] key once.



8.Standalone alarm disarm

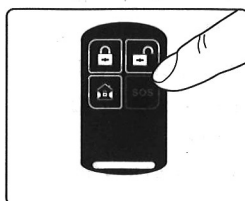
Standalone alarm disarm means to let the alarms in a state of non-alert.One disarm is the normal disarm operation after arm it;another disarm is,you need to stop this alarm while after its alarming;The normal zone will not work after disarmed,except for 24-hour zones Remote operation:press remote control [] button once.



9.SOS

Some special cases occur at home, sudden illness for the elderly or children results in first aid;in case of sudden fire, help is needed;criminals burglary muggings,at such situations,you could press [sos] button or wireless emergency button alarm.It will immediately give an alarm,tell the host family.

Remote operation: press remote control [sos] once.



Technique Parameter

Power output	DC5V 1000mA
Standby current	≤13mA
Alarm current	≤230mA
Frequency	433MHz/315MHz
Code	SC 2262 IC / 4.7MΩ
Temperature	-20°C ~ +55°C
Humidity	40% ~ 80%RH
Backup Battery	Lithium-ion battery 3.7V/280mA

Maintenance

1.System testing

Although the alarm system is used every day, it still needs regular care, maintenance and inspection, to ensure that the alarm system will be stable, reliable and safe. Normally the standalone alarm needs a thorough inspection every 3 months and the detectors need to be checked once a month.

2.Standalone alarm testing

- 2.1 Whether it could arm or disarm well.
- 2.2 Whether the detector signal is received or backup battery works well.

3.Detector testing

- 3.1 Manually trigger the detector to check whether it.
- 3.2 Check batteries of all detectors to make sure whether they are under-voltage.
- 3.3 Check whether wireless detector is communicated with the standalone alarm during emission testing.

4.Notes

Do not dismantle, repair and modify products privately, or may cause accidents and failures.

Do not drop the product on the ground or hard objects to avoid strong impact to cause failure and damage.