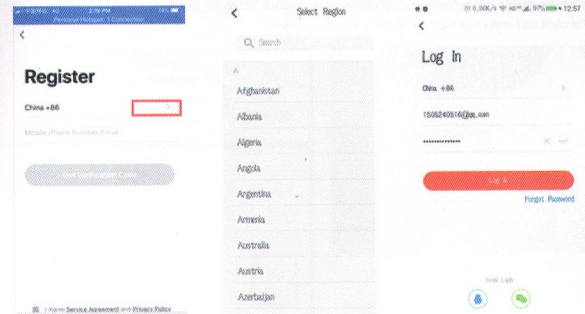
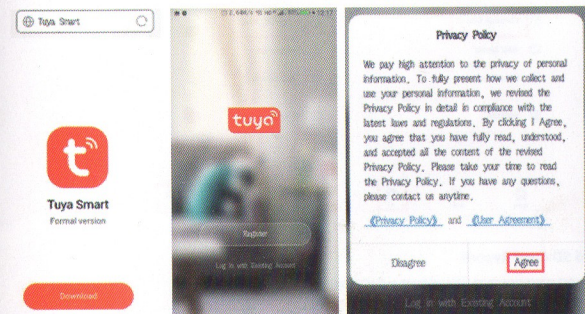


AI Smart camera manual

01 Download and Install APP, Register

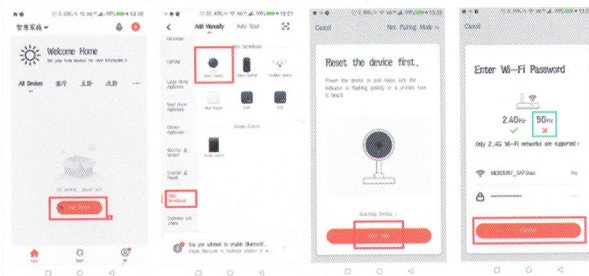
Scan QR code Or acquire "TuyaSmart" from APP Store



Power the device on and make sure the indicator is flashing slowly or a prompt tone is heard.

02 Add Device and Connect Network

2.1 Add Device: click "Video Surveillance"——"Smart Camera"



2.2 Connect Network

① connect the mobile phone to the router Wi-Fi.

② search the Wi-Fi SSID.

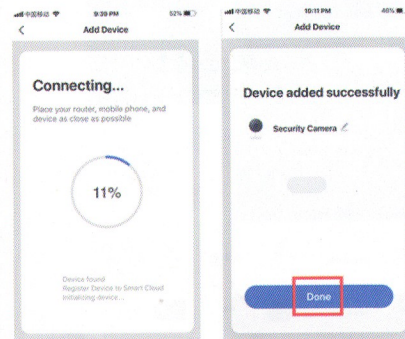
③ enter Wi-Fi password.

Camera not support 5GHz Wi-Fi, Only 2.4GHz Wi-Fi networks are supported.

④ The mobile phone displays a QR code. Use the camera to scan to the QR code 15cm to 20cm away from the mobile phone.



⑤ When the device added successfully, a Prompt tone is heard and displays 100%.



⑥ If device installation failure, please use Other Mode: Smart configuration

Only support QR Cord Net-pairing and Smart configuration

